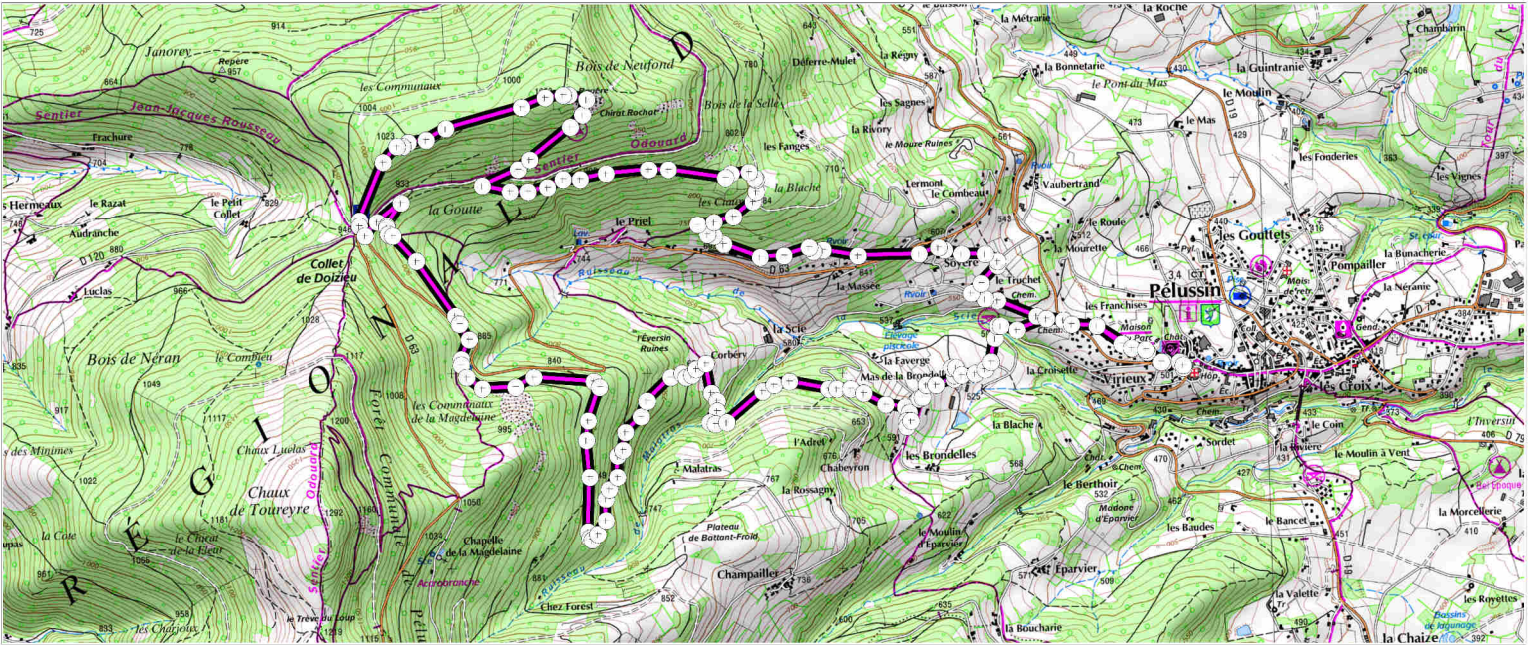
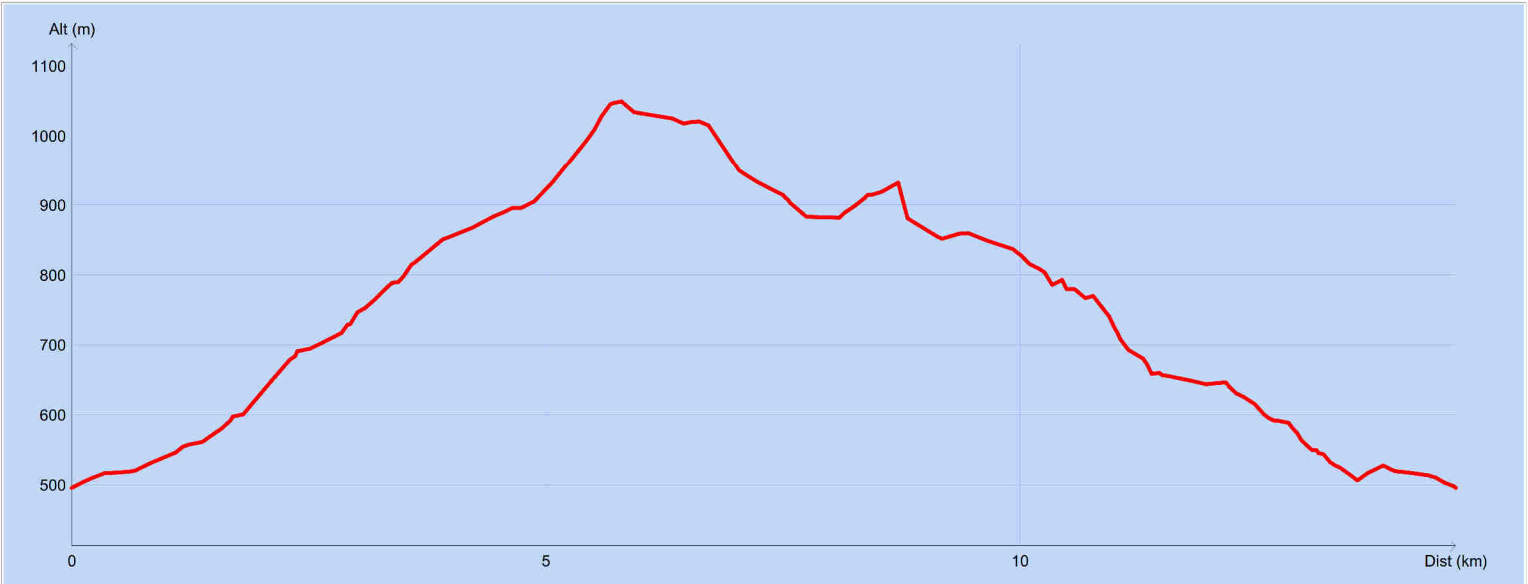


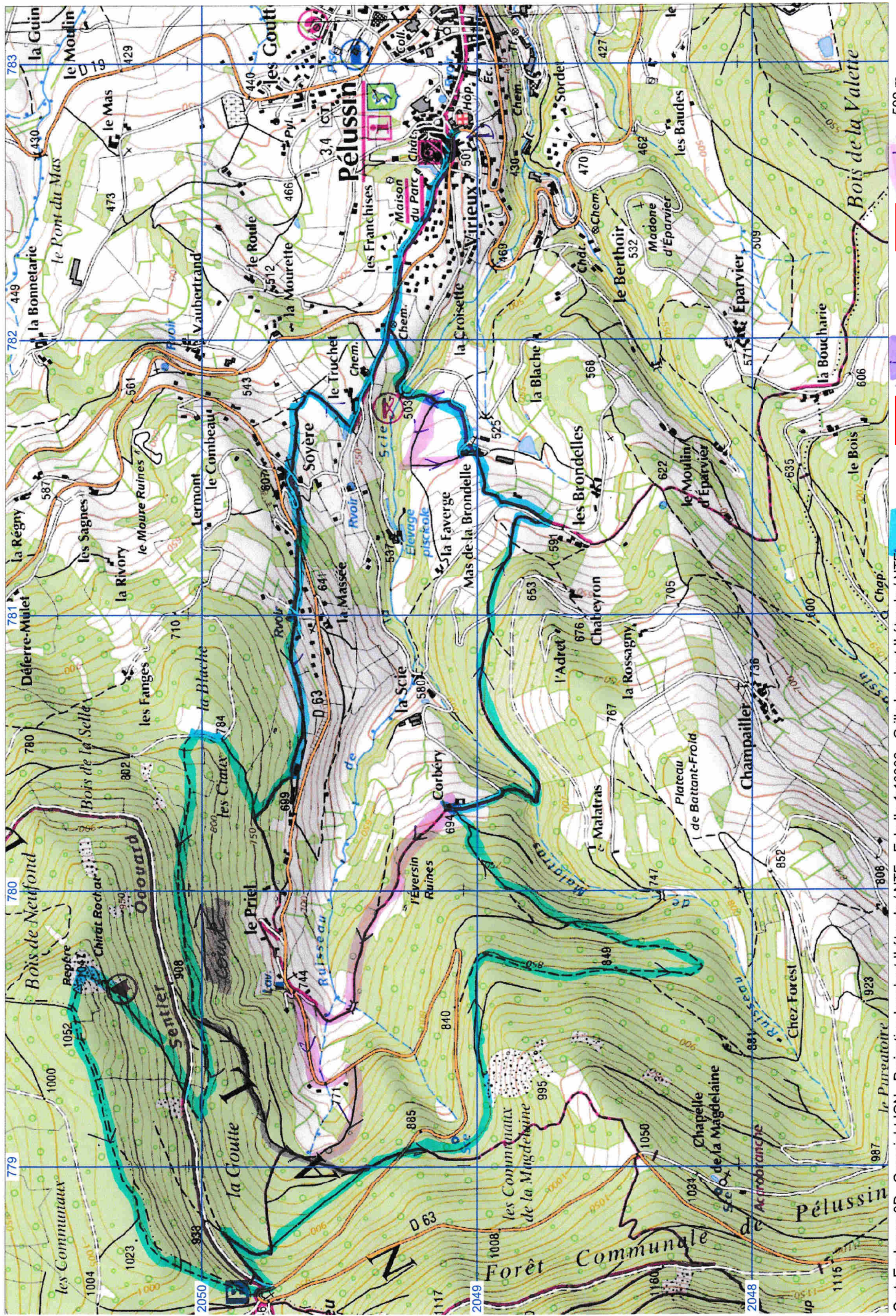
Route : PELUSSIN 42 long



Copyright IGN

Distance totale : 14.686 km
Montée : 581 m
Descente : 649 m
Y Minimum : 496 m
Y Moyen : 757 m
Y Maximum : 1049 m

Durée estimée : 04:57:11
Moyenne estimée : 3.0 km/h



long 14,6km

inter 12,1km

503 m

cont 10,8km

500 m

400 m